



GAT MONTHLY MEMBERSHIP PROGRESS REPORT

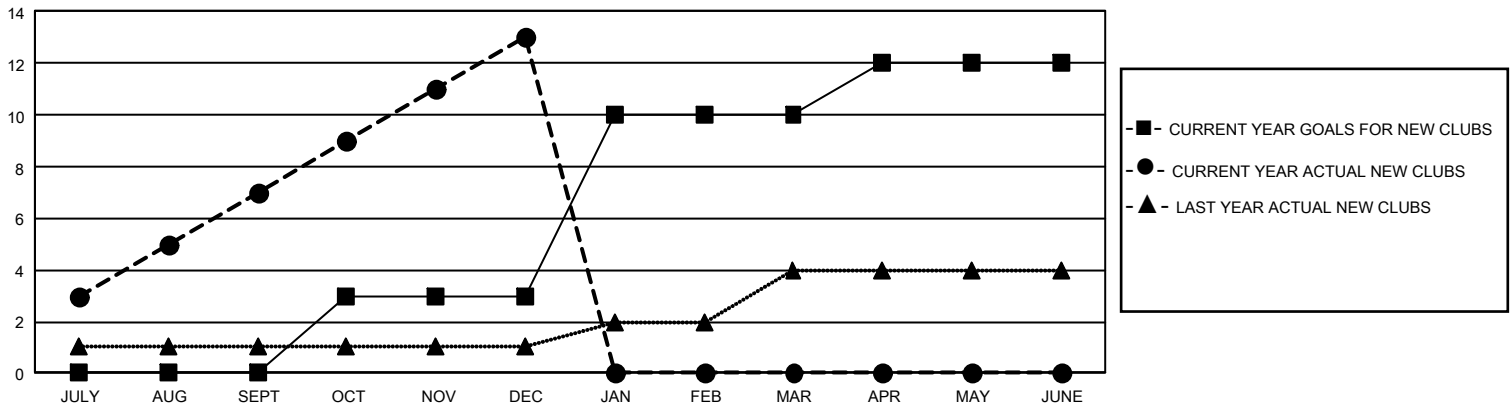
Results as of: 12/31/2025

GMT Constitutional Area 5 - J, Group H

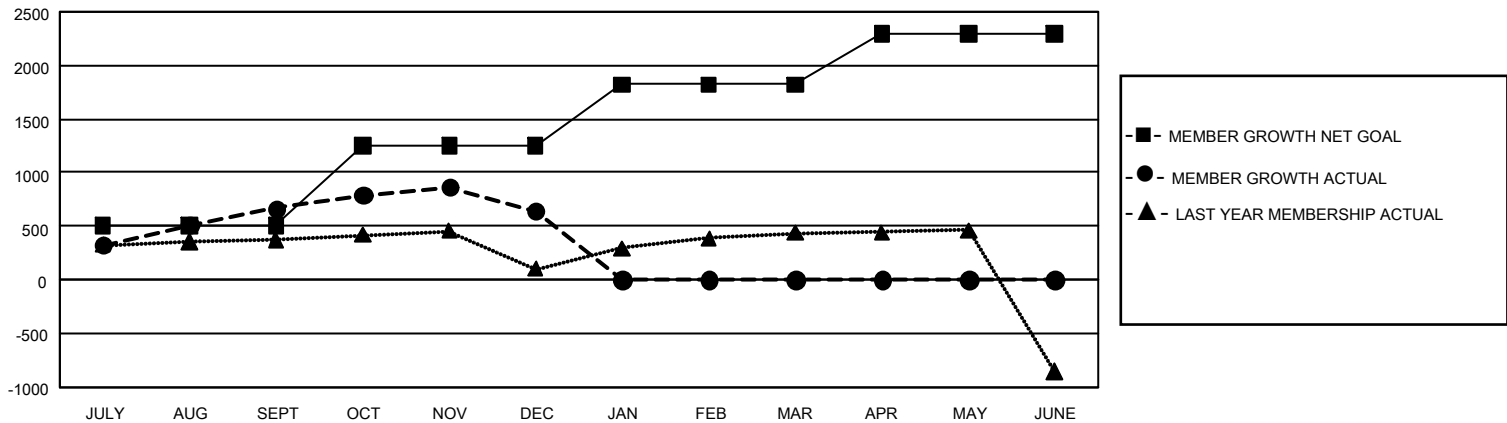
REPORT DOES NOT INCLUDE CLUBS IN UNDISTRICTED AREAS.

Clubs				Members			
RESULTS FOR 2025-2026				RESULTS FOR 2025-2026			
QUARTER	NEW CLUB GOAL	NEW CLUBS	DROPPED CLUBS	QUARTER	MEMBER GROWTH NET GOAL	MEMBER GROWTH ACTUAL	DROPPED MEMBERS ACTUAL (including transfers)
JULY/AUG/SEPT	0	7	0	JULY/AUG/SEPT	507	1,180	443
OCT/NOV/DEC	9	6	1	OCT/NOV/DEC	745	594	592
JAN/FEB/MAR	21	0	0	JAN/FEB/MAR	570	0	0
APR/MAY/JUNE	6	0	0	APR/MAY/JUNE	473	0	0

GOALS AND ACTUAL NEW CLUBS CUMULATIVE



GOALS AND ACTUAL MEMBERS CUMULATIVE



DROPPED CLUBS: 1

462 CLUBS OF 731 ADDED 1 OR MORE NEW MEMBERS

GENDER DISTRIBUTION

MALE	22,625 (75.84%)
FEMALE	7,200 (24.13%)
NON BINARY	0 (0.00%)
PREFER NOT TO ANSWER	9 (0.03%)

DROPPED MEMBERS

DECEASED	115
CLUB CANCELLED	0
OTHER	918
TOTAL	1,033

[CLICK HERE FOR CUMULATIVE MEMBERSHIP DATA](#)

TOTAL FAMILY UNIT MEMBERS	9,476
FAMILY MEMBERS PAYING HALF DUES	5,217